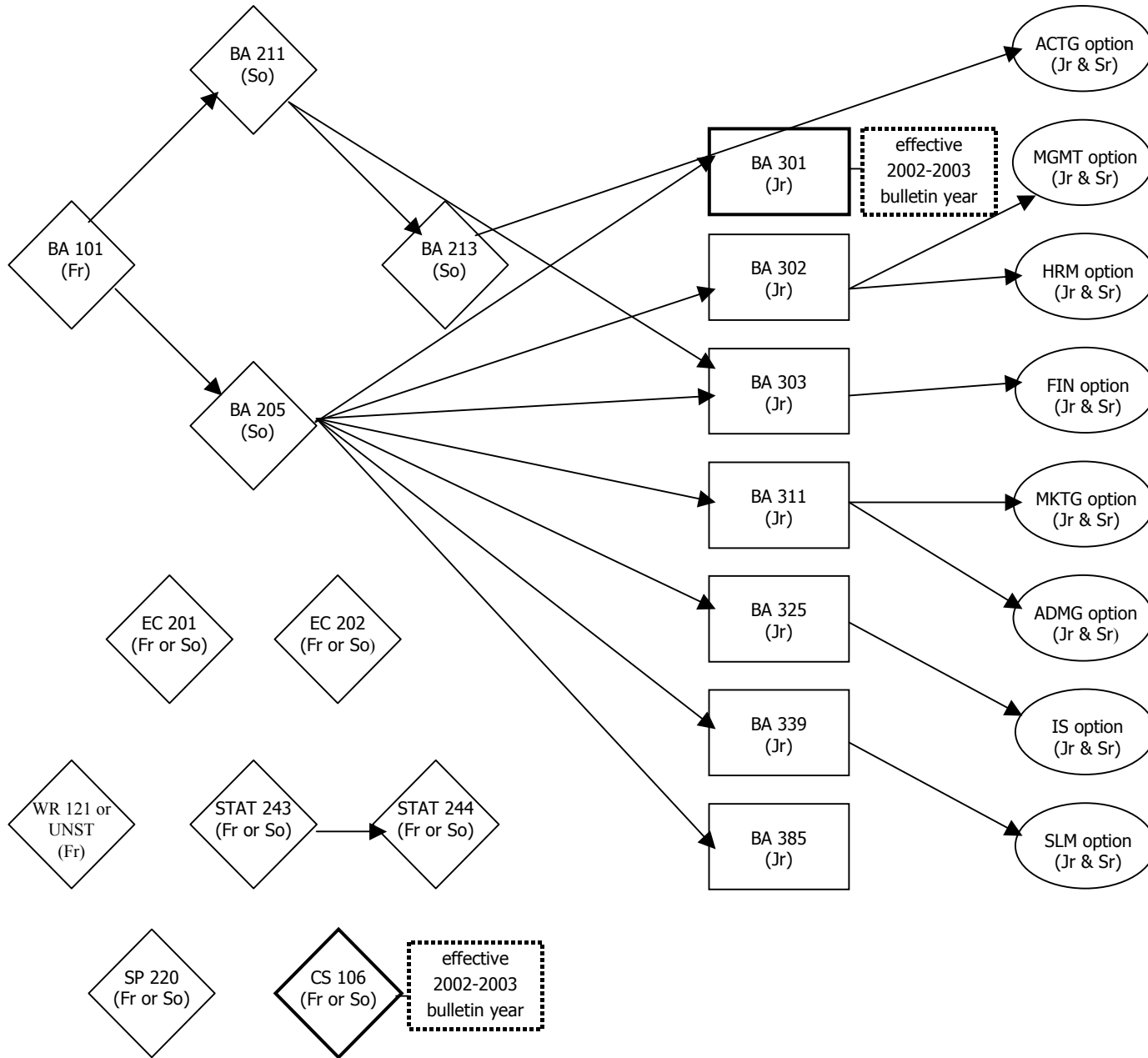


SBA Flowchart



Legend of Abbreviations

Option areas:
 ACTG Accounting
 FIN Finance
 MGMT General Management
 HRM Human Resource Management
 IS Information Systems
 MKTG Marketing
 ADMG Advertising Management
 SLM Supply and Logistics Management

Class standing:
 Fr Freshman year (0-44 credit hours)
 So Sophomore year (45-89 credit hours)
 Jr Junior year (90-134 credit hours)
 Sr Senior year (135+ credit hours)

Legend of Symbols

◇ Pre-Business coursework. Required for admittance into the SBA. Must earn a C or better.

□ Core coursework. Required for ALL business majors. Must earn a C or better.

○ Option areas. A student must choose a minimum of one. Must earn a C or better. (See reverse side for option area details)

→ Indicates the order of prerequisites. Taking courses out of order will result in a loss of credits.